

13th International Burma Studies Conference

Distant Past(s), Latest News: Scholarly Insights on Burma/Myanmar

August 3-5, 2018

Bangkok

Conference Program
www.13ibsc2018.com/panels

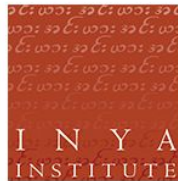
Conference Convenors



NORTHERN ILLINOIS UNIVERSITY

Center for Burma Studies

*Division of Research and
Innovation Partnerships*



Conference Official Partner



The Asia Foundation

Conference Supporting Partners



NORTHERN ILLINOIS UNIVERSITY

Center for Southeast Asian Studies

College of Liberal Arts and Sciences



**THE
SIAM
SOCIETY**



Last updated: 29 July 2018

LOCATIONS

Conference Hotel

PULLMAN BANGKOK GRANDE SUKHUMVIT
(located opposite the Siam Society on Asoke)
30 Sukhumvit 21 Asoke Road
10110 BANGKOK
THAILAND

Siam Society

131 Soi 21, Asoke (Sukhumvit) Road,
10110 BANGKOK
THAILAND
<http://www.siam-society.org/about/contact.html>

PRE-CONFERENCE EVENTS

Thursday August 4	
14:00	17:00
Pre-Registration At Siam Society (just across Pullman Hotel) Foyer area outside the auditorium	
15:00, 15:30, & 16:00	Tours of the Siam Society During the pre-registration hours, the Society is delighted to provide a brief tour around its ground covering the introduction of Kham Thieng house (Lanna heritage house) and a quick walk up to its library. The tour is expected to last about 30-40 mins. Tours will be on a first-come first-served basis and can accommodate up to 20 people each.

Friday August 3

8:00	12:00	Registration of Conference Participants 3rd Floor
9:00	10:30	Opening Ceremony *** Keynote Speakers - Dr. M.R. Rujaya Abhakorn (SEAMO SPAFA), Daw Moe Thuzar (ISEAS), U Myo Thant (ADB/Parami Institute) Grand Ballroom
10:30	10:40	Coffee and Tea Break (4th Floor)

		Grand Ballroom (4th Floor)	Junior Ballroom 1 (3rd Floor)	Junior Ballroom 2 (3rd Floor)	Junior Ballroom 3 (3rd Floor)	Room 5 (4th Floor)
		Panel #1	Panel #2	Panel #3	Panel #4	Panel #5
Friday August 3 Morning		Constructing the Political in Myanmar: Reflections on the Field through the Scholarship of Robert H. Taylor Organizer & Moderator: Mairii Aung-Thwin	Women of Myanmar/Burma: Voices, Vocations, and Visions Moderator: Hilary Faxon	From Crawford to Luce: Towards a Genealogy of Colonial Historiography in Burma and Beyond Organizer & Moderator: Patrick McCormick	The Burden/Benefit of (Our) History-Precarity and Youth in Contemporary Myanmar Organizer & Moderator: Mike Griffiths	Pyu Cities and Bagan: New Insights, New Initiatives Moderator: Julian Wheatley
10:40	10:55	Tin Maung Maung Than Myanmar State and Taylor's "State in Myanmar"	Hilary Faxon & Pyo Let Han Who Are Myanmar's Female Farmers?	Patrick McCormick Luce and the Creation of the Mons as a Historical Subject	Justine Chambers Coming of Age in Hpa-An: Navigating A More Cosmopolitan Morality	Julian Wheatley Pyu Inscriptions on Molded Tablets: A Way Forward?
11:00	11:15	Maung Aung Myoe Sayar Robert H. Taylor and the Myanmar Armed Forces	Rachelle Saruya Forging Monastic Careers: Buddhist Nuns and their Experiences with the Scriptural Examinations	Stephen Lee Keck The Descent from Diplomacy: The Emergence of British Colonial Historiography in Burma	Mya Thida Soe & War War Pyone Roadmaps: Pathways to Adulthood of Street and Working Children in Mandalay	Charlotte Galloway Protecting Cultural Heritage in Myanmar
11:20	11:35	Kyaw Yin Hlaing How Prof. R. Taylor and His Myanmar Audience Influenced Each Other	Sandi Sein Thein "The New Burmese Women" – Redefining the Modernity with Technology	Thanapas Dejpawuttikul Colonial Burmese History in Early Modern Thai Historiography: The Theory of the Migration of the Tai Race	Pwint Hlwar & Nyein Chan Oo Religious Teachings or Family Pressure? Comparative Case Studies of Drug Avoidance amongst Youth from two Myanmar Cities	Liu Yun A New Historical Perspective of the Chinese Inscription of Bagan
11:40	11:55	Mairii Aung-Thwin A Political Scientist Among the Historians: Political Biography as Myanmar History in the Work of Robert H. Taylor	Mon Mon Myat Politics as a Vocation Aung San Suu Kyi: Politician or Activist		Aye Aye Aung & Lei Kay Thi Dying Tradition or Living Truth? Traditional Festivals of The Yinbaw Ethnic Group of Kayah State, Northeast Myanmar	
12:00	12:15	Ang Cheng Guan Robert Taylor and Myanmar Studies: A Review	Lisa Brooten "The Lady" Re-Presented: Media and the Gendered Politics of Myanmar's Transition		Mike Griffiths Furnival's Folly: Intersectionality and Youth Identity Construction in Contemporary Myanmar	
12:30	13:30	Lunch Break (on your own)				

		Ballroom 1 (4th Floor)	Ballroom 2 (4th Floor)	Junior Ballroom 1 (3rd Floor)	Junior Ballroom 2 (3rd Floor)	Junior Ballroom 3 (3rd Floor)	Room 5 (4th Floor)
		Panel #6	Panel #7	Panel #8	Panel #9A	Panel #10	Panel #11A
Friday August 3 Afternoon		Myanmar/Burma-India Connections and Border Affairs Moderator: Lindsay Stubbs	Myanmar/Burma on the Global Stage and in Global Affairs Moderator: Enze Han	Myanmar's Political and Economic Transition under NLD's Leadership and its Future Prospects Moderator: Ian Holliday	Local Responses to the British Colonial Administration of Burma Moderator: Takahiro Iwaki	Non-Burman Languages and their Contact with Burmese/Myanmar Language Moderator: Mathias Jenny	Visual Culture in Bagan Moderator: Arsenio Nicolas
13:30	13:45	Amrita Dey Kolkata-Myanmar Relations: Possibilities and Challenges	Enze Han International Condemnation and China's Enticement: Myanmar's Foreign Policy Predicament	Zaw Htet Aung Pro-Business Circles vs. Individual & Civil Rights – A Perspective on Land Rights in Myanmar	Takahiro Iwaki Suspension, Reinstatement, and Dismissal: The Experience of a Burmese Clerk and the Colonial Administration in the Late Nineteenth Century	Phyu Phyu Win Danu, a 'Non-standard' Variety of Burmese, Burmese Dialect or Ethnic Minority Language?	Pyiet P. Kyaw & Arsenio Nicolas Musical Instruments Illustrated on Bagan Monuments and Temples, 11th to the 13th Century, CE.
13:50	14:05	Deba Kumar Chakraborty The Potentialities and Constraints of Border Tourism Development along the Indo-Myanmar Border	Pinitbhand Paribatra The Roles of International Actors in Myanmar's Democratization Process (2008-2015)	Richard Roewer Understanding the NLD's Approach of Reduced Confrontation with the Military	Hitomi Fujimura Baptist Karen Intellectuals' Pursuit of Official Recognition in British Burma: Participation in the 1881 Census and the Formation of the KNA	Rikker Dockum Basic Word Order in Tai Khamti: Language Contact with Burmese	Sally Bamford Imagery of the Inside Thirty-Seven Lords at the Shwezigon, Bagan
14:10	14:25	Lindsay Stubbs & Pundarik Mukhopadhaya A Potential Rail Link between Burma and India	Mary Mostafanezhad & Robert Norum From Silk Road to Belt Road: Internet, Infrastructure and the Political Ecology of Livelihood Transition in Burma and Thailand	Khin Maung Nyo Political Economy of Economic Reform in Myanmar Since 2016	Panel #9B	André Müller Diglossia in Jinghpaw Kachin and the Decay of Grammatical Complexity	Tint Lwin Cultural Heritage of Paintings of the Abeyadanar Temple in Bagan
					Film Screening		
14:30	14:45	Anup Shekhar Chakraborty The Zo hnahthlak and the 'Burma mi' in Mizoram	Shae Frydenlund Rohingya Women's Labor and the Political Economy of Displacement	Ian Holliday Liberalism and Democracy in Myanmar	Emily Hong & Mariangela Mihai Jordan Glimmers of Subjectivity: Karen Women and the Refugee Experience	Keisuke Huziwara The Autonym of Kadu in Burma and Related Place Names	Panel #11B
							Re-Visiting Ne Win and Ne Win's Period Moderator: Martin Michalon
							Myint Zan Two Recent Biographies of Ne Win and Enver Hoxha Juxtaposed and Contrasted
14:50	15:05					Mathias Jenny What's in a "Word"? The Hidden Burmanization of the Mon Language	Martin Michalon Sightseeing in Ne Win's Burma: Glimpse into a Forgotten History
15:20	15:35	Coffee and Tea Break (3rd & 4th Floor)					

Friday August 3 Afternoon		Ballroom 1 (4th Floor)	Ballroom 2 (4th Floor)	Junior Ballroom 1 (3rd Floor)	Junior Ballroom 2 (3rd Floor)	Junior Ballroom 3 (3rd Floor)	Room 5 (4th Floor)
		Panel #12	Panel #13	Panel #14	Panel #15	Panel #16	Panel #17
		New Approaches to Old Problems: Armed Actors and Conflicts in the New Myanmar Organizer & Moderator: John Buchanan	Localizing Economic and Political Models and Practices Moderator: Tamas Wells	Claiming the “Interstices”: The Evolving Social Dimensions of Human-Land Relationships in Contemporary Myanmar Organizers & Moderators: C. Allaverdian & M. Boutry	Myanmar/Burma, its Society and Links to the Wider World in the Middle to Late Modern Period Moderator: Adrien Marest	Decentralization in Myanmar: Challenges, Constitutional Framework and Visions for the Future Organizer: Mael Raynaud Moderator: Moe Thuzar	Portraying Myanmar/Burma and its Diversity through Brush Strokes and Camera Shots Moderator: Carmín Berchiolly
15:35	15:50	John Buchanan Burma’s Conflicts: A Subnational Approach to Understanding Patterns of Militarized Violence	Prateep Chayalee The Yangon School of Economics and the Rise of Burma: Review the Past for Sustainable Present and Future of Myanmar	U San Thein & J.C.Diépart Large-Scale Land Acquisitions for Agricultural Development in Myanmar: Genealogy and Contemporary Issues	Adrien Marest The Importance of the Kingdoms of Ava and Pegu for European Trading Companies in the 18th Century	Tinzar Htun The 2008 Constitution and Decentralization	Khin Lay Maung A Survey of the 101 Peoples Depicted in Mural Paintings with a Focus on the Irrawaddy and Chindwin Rivers (17th to 18th. C)
15:55	16:10	Andrew Ong Navigating Liminality: United Wa State Army (UWSA) Political Practice 2014-2018	Motohiko Osuka Use of Electoral Lens to Promote Human Rights in Burma: Lessons from the Past General Elections of 1990, 2010 and 2015	Céline Allaverdian The New Land Front: Land Allocations at the Interstices	Khin Thidar Reconsidering King Badon’s Exertions on Buddhism in Myanmar in the Late 18th and Early 19th Century	Kim Jolliffe Ethnic Armed Organisation Governance and the Building of a Federal Union	Marie-Pierre Mol Ethnic Minorities in Myanmar Art: From Anthropology to Politics
16:15	16:30	David Scott Mathieson A War of Words. The Strategy of Insurgent Public Relations in Burma/Myanmar	Amy Doffegnies & Tamas Wells The ‘Vernacularisation’ of Human Rights in Myanmar	Maxime Boutry Land Titling Warfare and Dominion: Post-Conflict Territorialisation Processes and Livelihoods Changes in Eastern Myanmar Borderland	Nant Aye Saw Nwe Socio-Economic Conditions under King Badon (1782-1819)	Maw Htun Challenges and Avenues for Natural Resources Federalism	Carmín Berchiolly Capturing Burma: Reactivating Colonial Photographic Images through The British Raj’s Gaze
16:35	16:50	Kyungmee Kim Political Legacy and Implications of Rebel Governance in the Time of Transition	Ngu Wah Win Gender Equality in Myanmar: Localizing Economic Models to Decompose Gaps	Kevin Woods “Conflict Rubber” and Military-State Making in a Post-War Context in Southeastern Myanmar		Nicolas Salem-Gervais Language Policy and Decentralisation: Opportunities, Prospects and Challenges to the Teaching of Ethnic Languages in Public Schools: Nation-Wide Issues and the Kengtung Region Case-Study	Anthea Snowsill Commodifying Culture: Exploring the Temporalities of Cultural Production and Photography Tourism on Inle Lake

Saturday August 4 (Morning)

8:00	12:00	Registration of Conference Participants (3rd Floor)					
Saturday August 4 Morning		Ballroom 1 (4th Floor)	Ballroom 2 (4th Floor)	Junior Ballroom 1 (3rd Floor)	Junior Ballroom 2 (3rd Floor)	Junior Ballroom 3 (3rd Floor)	Room 5 (4th Floor)
		Panel #18	Panel #19 (session I)	Panel #20	Panel #21	Panel #22	Panel #23
		Civil Society and Local Governance Moderator: Keiko Tosa	The Consolidation of the Democracy in Myanmar: Domestic and International Factors Organizer & Moderator: Li Chenyang	Frontiers and the Foreign: Place-making and the Global in Myanmar's Colonial and Postcolonial Past Organizer & Moderator: Maitrii Aung-Thwin	Performing Music and Experiencing Soundscapes in Myanmar/Burma Moderator: Sayuri Inoue	Myanmarese Transnational Mobility in ASEAN: Social & Cultural Capitals, Language Policy, Upward Mobility and Social Protection Organizer & Moderator: Morakot Meyer	Craft and Craftsmen/women Across a Wide Spectrum of Practices, Quotidian and Sacred Moderator: Thweep Rittinaphakorn
8:15	8:30	Yu Szu-Tu The Emergence, Crossover, and Connection of Local NGOs in Myanmar	Li Chenyang Trend Analysis of Political Transition in Current Myanmar	Wang Zhiwei Trouble with the Frontier: The British Colonial Administration of Trade in the China-Myanmar Borderland Region	Khin Saw Nwe Aspects of Myanmar History: Culture Value of National Races of Lisu's Music and Dances in Kachin State	Morakot Meyer Riding the Tide of Transnational Mobility in ASEAN: Offline and Online Socio-Cultural Capitals of Female Migrant Workers from Myanmar – Examples from Thailand and Singapore	Luke Corbin What's Burmese About Burmese Craft Beer?
8:35	8:50	Keiko Tosa Transformation of Buddhist Associations into Non-Governmental Organizations in Myanmar	Ko Ko Hlaing Rhetoric and Realities; Dichotomies in Current Myanmar Reforms	Phyo Win Latt The "Blasphemous" Book: The Immediate Cause of the Indo-Burman Riots of 1938	Sayuri Inoue Oral Transmission System for Burmese Classical Songs: Bazat-hsaing or Mouth-music for Burmese Harp Music	Wimonsiri Hemtanon Out of the Ordinary: Thai Language as Social and Cultural Capital of Female Migrant Workers in Little Myanmar, Mahachai	Thweep Rittinaphakorn Luntaya Acheik, Myanmar's Woven Signature: A Journey of its Enduring Production from Mid-19th to 21st C.
8:55	9:10	Ayako Saito Muslim Non-Governmental Organizations in Myanmar	Thida Tun Analysis on the NLD Government's Approach to Peace Process in Myanmar	You Chenxue Never the Right Time: Settling Burma's Huaqiao Dual-Nationality Issue, 1949-1980	Andrew Dicks Mediations of "Buddhist" Sound in Mandalay: The Case of the Dhamma-Disturbing Dutchman	Sophana Srichampa Searching for Sustainable Thai Language Policy and Planning for Unskilled Migrant Laborers from Myanmar: Some Thoughts from Fieldworks in Thailand	Catherine Raymond Reversed Glass Paintings: A Comparative Approach
9:15	9:30	Makiko Takeda Local Civil Society-Led Initiatives for Securing Rights of Poor Children: Indication from Northern/Southern CSOs	Kong Jianxun Demographic Factors of Populism Attitudes in Democratizing Myanmar	Moe Thuzar Finding the National in Myanmar's Foreign Policy History: A Historiographical Approach	Jon Fernquest The Trance-Like Martial Sounds of the Burmese Hne and Thai Pi Chawa: From Nat Bwe Accompaniment to Thai Boxing Music	Narumol Nirathron Locating Left-Behind People in the Social Protection Scheme: Reflections from a Field Study in two Villages in Myawlamyine	
9:35	9:50	Jérémie Sanchez In the Wards of Mandalay: Everyday Urban Governance in a Time of Transformation			Hsin-chun Tasaw Lu Experience Macau, Touching Moments: Burmese Music and Dance Performances, Identity Negotiation, and City Tourism in Macau	Min Zarni Lin Cause and Consequence of International Migration: The Case of Mon State, Myanmar	
10:10	10:40	Coffee and Tea Break (3rd & 4th Floor)					

		Ballroom 1 (4th Floor)	Ballroom 2 (4th Floor)	Junior Ballroom 1 (3rd Floor)	Junior Ballroom 2 (3rd Floor)	Junior Ballroom 3 (3rd Floor)	Room 5 (4th Floor)
Saturday August 4 Morning		Panel #24	Panel #19 (session II)	Panel #25	Panel #26	Panel #27	Panel #28
		Community & Occupational Health Associated with the Sustainable Development Goals; Research and Capacity Building in Central Myanmar Organizer & Moderator: Heidi West	The Consolidation of the Democracy in Myanmar: Domestic and International Factors Organizer & Moderator: Li Chenyang	Rivers, Estuaries, and Livelihoods in Lower Myanmar/Burma Moderator: Stephen Campbell	Freedom of Expression in Myanmar/Burma from the Age of Colonial Cartoons to the 21st Century's Cyberworld Moderator: Lennon Chang	The Affordances of Burmese Citizenship: Opportunities, Exclusions, and Contingencies Organizer & Moderator: Elliott Prasse-Freeman	Socio-linguistics Studies and Lexicography Moderator: Jennifer Lewis-Wong
10:40	10:55	Layhoon Lee & Hannah Speaks Health Risk Perceptions Related to Mercury Use in Artisanal Mining Sites in Myanmar	Zhu Xianghui The Responsibility to Protect and State Sovereignty: From Myanmar's Saffron Revolution to the Rohingya Issue	Stephen Campbell Reading Myanmar's Inland Fisheries	Khin Saw Mya Hnin Cartoons on Myanmar Politics (1915-1962)	Gerard McCarthy Self-Reliance as a Mechanism of Entitlement in Contemporary Myanmar	Kyi Kyi Moe A Study of the Mistakes made by Foreign Students Studying Myanmar as a Foreign Language
11:00	11:15	Heidi West Labor Migration and Social Determinants of Health in Myanmar	Kong Peng Civil-Military Relations during the Era of NLD government	Benoit Ivars Sharing the River, Dividing the Land: Territoriality and Village Settlement in Pyi Taw Htar Kyun, Ayeyarwady Delta	Thomas Patton On Monks and Memes: Buddhist Satire in Contemporary Myanmar	Gillian Cornish Exploring the Role of Social Capital after Relocation to Rebuild Livelihood Assets in Lieu of State Support	Mon Mon Aung A Sociolinguistics Study of English Code-Mixing in Myanmar Language Based on Myanmar Journals
11:20	11:35	Tomoyuki Shibata Risk Factors Associated with Maternal and Child Health in Myanmar	Meng Zi Jun The Implications of Rohingya Issues for Myanmar Political Transition	Alan Potkin Interactive Visualization of Salween Basin Development and its Aggregate Impact on the Thanlwin Estuary	Lennon Chang Combating Cybercrime in Myanmar: Trends and Challenges	Kirt Mausert Two Sides of the Same Arakanese Coin: Ethnogenesis as Schismogenesis between/amongst 'Rakhine' and 'Rohingya'	Jennifer Lewis-Wong Corpus Studies in Burmese - Possibilities and Pitfalls
11:40	11:55	Devin Metoyer Understanding Health Seeking Behaviors in Myanmar		Cherry Aung Assessing Potential Threats to Fisheries and Socio-Economic Conditions at the Thanlwin River Estuary		Elliott Prasse-Freeman Burma's Brokered Citizenship: Responsibility Discourse and the Politics of Passage for those outside 'Political Society'	Nathan A. Waxman The Myanmar English Dictionary (MED) at 25: Trends in Burmese Lexicography for the Anglophone World
12:00	12:15					Jayde Lin Roberts & Elizabeth Rhoads Nalehmu: Myanmar's common practice of everyday politics	
12:30	13:30	Lunch Break (on your own)					

Saturday August 4 Afternoon		Ballroom 1 (4th Floor)	Ballroom 2 (4th Floor)	Junior Ballroom 1 (3rd Floor)	Junior Ballroom 2 (3rd Floor)	Junior Ballroom 3 (3rd Floor)	Room 5 (4th Floor)
		Panel #29	Panel #30	Panel #31	Panel #32	Panel #33	Panel #34
		Environmental and Sustainability Issues in Myanmar Organizer & Moderator: Melissa Lenczewski	The Rohingya Crisis Moderator: Anthony Ware	From Shadow Economy to Special Economic Zones: Looking for Opportunities across Time and Space Moderator: Wen-Chin Chang	Documenting, Exploring, and Supporting Dissent in Myanmar/Burma Moderator: Jieun Baek	Reimagining Pluralism – Shifting/Parallel Identity Boundaries and Performativity in Myanmar Organizer & Moderator: Mike Griffiths	Architectural History Across Borders, Time, and Functions Moderator: Chotima Chaturawong
13:30	13:45	Melissa Lenczewski (Moderator) Tomoyuki Shibata; James L. Wilson Wesley Swingley; Laura Richards	Wathanyoo Phakthong From “Bengalis” in U Pho Kyar’s Time Testing Short Story to “Rohingyas” in Reality: The Roots of Racial Prejudice in the Myanmar Literature	Wen-Chin Chang Illicit Economic Exchanges across the Sino-Burmese Border during the Cold War	Jieun Baek The Bold and Brave of Burma: A Micro-Level Study of the Early Movers of Dissent Between 1988-2011	Gerard McCarthy Disasters and Post-Socialist Citizenship in Myanmar	Chotima Chaturawong Sukhothai Viharas: Cultural Relations between Thailand and Myanmar
13:50	14:05		Costas Laoutides & Anthony Ware (Re)Constructing Realities of Conflict and Violence in Rakhine State	Hein Khaing Living Space and Myanmar-Chinese Identification: A Case Study of Mongwun-Burma	Chinami Oka Transnational Civil Revolt Against National Military Regime: Emergence and Development of Grassroots Connectivity of Japan and Burma Since 1988	San San Oo How Shall We Die Now? The Rise of Co-Operative of Funeral Service Societies in Yangon	Ei Kay Zin Study on Architectural Characteristics of Colonial Residential Buildings in Nyaung U, Mandalay District
14:10	14:25		Ishrat Hossain Buddhist-Muslim Relations in Bangladesh-Myanmar Borderland in the Shadow of the Rohingya Crisis	Moe Thida Lwin The Labour Market in Mae Sot (1990-2017) and Thailand’s New Special Economic Zone Policy	Kyungmee Kim Popularizing Dissent: The Interplay between Violent and Non-Violent Resistance in Myanmar	Su Su Hlaing & Cho Cho Winn Are We Trapped in the History? Ethnic and Religious Othering in Myanmar	Ye Yint Aung Study on Architectural Characters of Vernacular Houses in Shankalay Kyun, Mandalay
14:30	14:45		Anthony Ware Conflict Transformation and Peace Building Intervention Options for International Development Agencies Working in Rakhine State	John Walsh Spatial Economic Initiatives in Myanmar	Andy Buschmann Introducing the Myanmar Protest Event Dataset: Motivation, Methodology and Research Prospects	Nilar Tin & Lwin Lwin Aung Seeds of Change: Traditional Agriculture Practices and Ethnic Identity in Kayah State	
14:50	15:05					Mike Griffiths Parahita and Place: The Boundaries of Localized Welfare	
15:20	15:35	Coffee and Tea Break (3rd & 4th Floor)					

		Ballroom 1 (4th Floor)	Ballroom 2 (4th Floor)	Junior Ballroom 1 (3rd Floor)	Junior Ballroom 2 (3rd Floor)	Junior Ballroom 3 (3rd Floor)	Room 5 (4th Floor)
Saturday August 4 Afternoon		Panel #35	Panel #36	Panel #37	Panel #38	Panel #39	Panel #40
		Environmental Governance Revisited through State/non-State Perspectives Moderator: Frances O'Morchoe	Public Health and Medical Practices Moderator: Céline Coderey	Myanmar/Burma's Peace Process and Ceasefire Moderator: Ashley South	Myanmar's Shifting Media Landscape: Changes and Challenges Organizer & Moderator: Lisa Brooten	Myanmar's Pillars Re-Framed Moderator: Hans Bernd Zollner	Preserving Built Heritage Across Myanmar's Cultural and Ethnic Diversity: Case Studies Moderator: Thandar Phyoe
15:35	15:50	Frances O'Morchoe Lootable Resources in Shan Borderlands: The Politics of Extraction in 'Non-State' Spaces, C.1880-1900	Soe Thet Nyo Childcare Arrangement of Migrant Women Workers in the Garment Industry: A Case from Magway Region	Michal Kouřil Ceasefire Externalities: A Case Study of Armed Conflict in Myanmar	Lisa Brooten (Moderator) G. Venkiteswaran; Yan Naung Oak; Mon Mon Myat Sarah Oh; Jennifer Leehey; Carine Jacquet	Htet Min Lwin Buddhist Nationalist Movements and their Uses and Abuses of History	Saung Hsu Pyae Kyaw Ancient Floating Pagodas in Samka Area, Southern Shan State
15:55	16:10	Laur Kiik Northern Forest Complex or Kachin Land? Conservation and Ethnicity amid Northern Burma's War	Céline Coderey Negotiating Medical Efficacy in the Context of an Emerging Pan-national Medicine	Tony Waters & Soomboon Panyakom Why is Peace Elusive in Myanmar? An Answer from the Perspective of Thai Philosopher Prawase Wasi		Hans Bernd Zöllner Buddhist Metamorphoses of Marxism in Burma	Zin Zin Win Moh Architectural Study on Kayan Traditional Houses and its Compounds in Loikaw, Kayah State
16:15	16:30	Matthew Baird Environmental Governance in Myanmar and Transition Process amid Northern Burma's War	Yuzana Khine Zaw Gender, Medicines and Care: An Anthropological Study of Antimicrobials in Yangon	Ashley South Exploring Interim Arrangements in the Myanmar Peace Process		Amara Thiha Myths and Framing – Reconstructing the Tatmadaw	Thandar Phyoe & Urszula Strugala Conservation of Decorative Woodwork at 19th C. Shwe-nandaw Monastery in Mandalay
16:35	16:50						
Cocktail Dinner in the Grand Ballroom at the 'Siam Society' 19:00-21:00 PM							

Sunday August 5 (Morning)

8:00		10:00		Registration of Conference Participants (3rd Floor)						
Sunday August 5 Morning		Ballroom 1 (4th Floor)	Ballroom 2 (4th Floor)	Junior Ballroom 1 (3rd Floor)	Junior Ballroom 2 (3rd Floor)	Junior Ballroom 3 (3rd Floor)	Room 5 (4th Floor)			
		Panel #41	Panel #42	Panel #43	Panel #44	Panel #45	Panel #46			
		From State Building to Reform Process: Perspectives on the Longue Durée Moderator: Jörg Schendel	State Authority, Insurgencies, and Development of Borderlands Moderator: Patrick Meehan	Agriculture, Irrigation and Resilience of Communities across Time Moderator: Asuka Mizuno	The Myanmar Public in the Age of Abundance and Market Economy Moderator: Thomas Bruhn	Language Learning and Pedagogy Moderator: Rosalie Metro	Belief Systems, Religious Practices and Behavioural Studies Moderator: Mark Stanford			
8:00	8:15	Jörg Schendel The Konbaung State and Its Borderlands	Patrick Meehan The Militia Fix: Ordering Space at the Margins of the Myanmar State	Asuka Mizuno Reorganization of the Relationship between State and Rural Areas During and Post-World War II: Through the Analysis of Two Paddy Cultivation Schemes	Hein Latt Social Marketing Strategies for Behaviour Change of Diabetic Patients in Yangon Region in Myanmar	Soe Soe Myint & Sandar Htay A Linguistics Study of Myanmar Rhymes in the New Syllabus for Primary Level Students in Myanmar	Su Su Khin A Comparative Study of the Beliefs in Plants among Myanmar and Thai People			
8:20	8:35	Adam Howe How State Capacity Matters: A Study of the Cooptation and Coercion of Organized Religion in Burma/Myanmar (1948-)	Shona Loong At The Margins of a "Development Darling:" Sovereignty, State-Making, and Development in Karen State	Tin Nwe Oo Promoting Disaster Resilience in Rural Settlements: Case Study from the Ayeyarwady Delta	Aye Thu Htun Service Quality of the Private Hospital Sector in Mandalay	Rosalie Metro Possibilities and Challenges for Mother-Tongue Based Education in Myanmar: Lessons from Other Multilingual Societies	Mark Stanford Beyond Buddhism and Animism: Two New Dimensions of Burmese Religiosity			
8:40	8:55	Kihong Mun Possession and Persuasion: The Political Economy of Power Transition	SiuSue Mark Who Will Secure Our Land? Navigating Land Access in the Ceasefire Mixed-Control Karen Areas of Myanmar	Thura Aung Brief Account of the Socio-Cultural Development of Paithel villages in the Chin Hills of Chin State in Myanmar	Thomas Bruhn The Practise of Making Merits in Myanmar – Is There a Generation Gap? A Case Study	Khin Khin Myint & Than Than Htay A Brief Study of Current Linguistic and Sociolinguistic Status of the Mon Language	Nyein Ma Ma Myanmar Cultural Values and Organizational Behaviors			
9:00	9:15		Justinas Stankus The Recent (Re)Construction of Shanni Ethnicity							
9:30	9:45	Coffee and Tea Break (3rd & 4th Floor)								

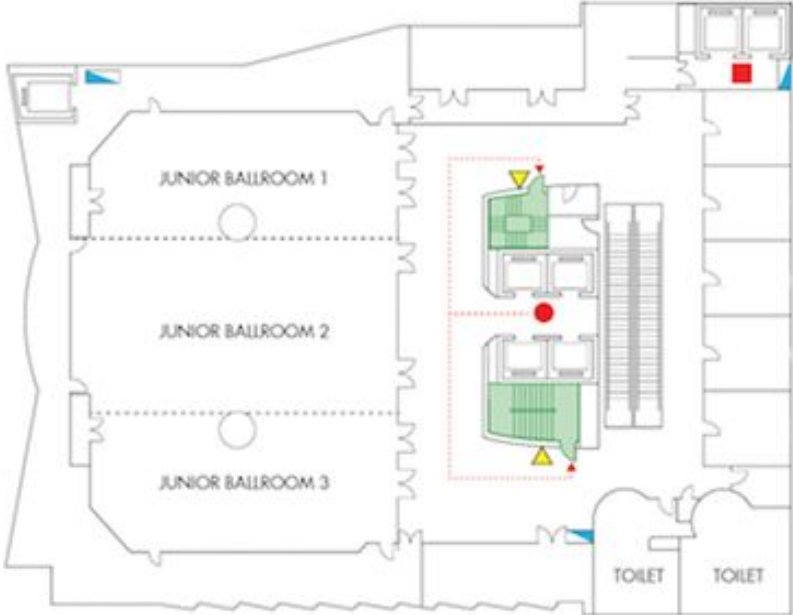
Sunday August 5 Morning		Grand Ballroom (4th Floor)	Junior Ballroom 1 (3rd Floor)	Junior Ballroom 2 (3rd Floor)	Junior Ballroom 3 (3rd Floor)	Room 5 (4th Floor)	
				Panel #47	Panel #48	Panel #49	
				Book Presentation	Book Presentation	Book Presentation	
9:45	10:20		<p>Ashley South</p> <p><i>Citizenship in Myanmar: ways of being in and from Burma</i></p> <p>edited by Ashley South & Marie Lall</p> <p>ISEAS-Chiang Mai University Press</p>	<p>Rosalie Metro</p> <p><i>Have Fun in Burma</i></p> <p>Northern Illinois University Press</p>	<p>Hans-Bernd Zöllner</p> <p><i>The Daughter: A Political Biography of Aung San Suu Kyi</i></p> <p>by Hans-Bernd Zöllner & Rodin Ebbighausen</p> <p>Silkworm Books</p>		

10:20	11:50	<p>Roundtable on Current Affairs Organized by the Asia Foundation</p> <p>U Ko Ko Hlaing (Center for Strategic and International Studies) Lisa Brooten (Southern Illinois University) John Brandon (Asia Foundation) Sean Turnell (Myanmar Development Institute)</p> <p>Grand Ballroom</p>				
11:50	12:00	<p>Closing Ceremony Grand Ballroom</p>				

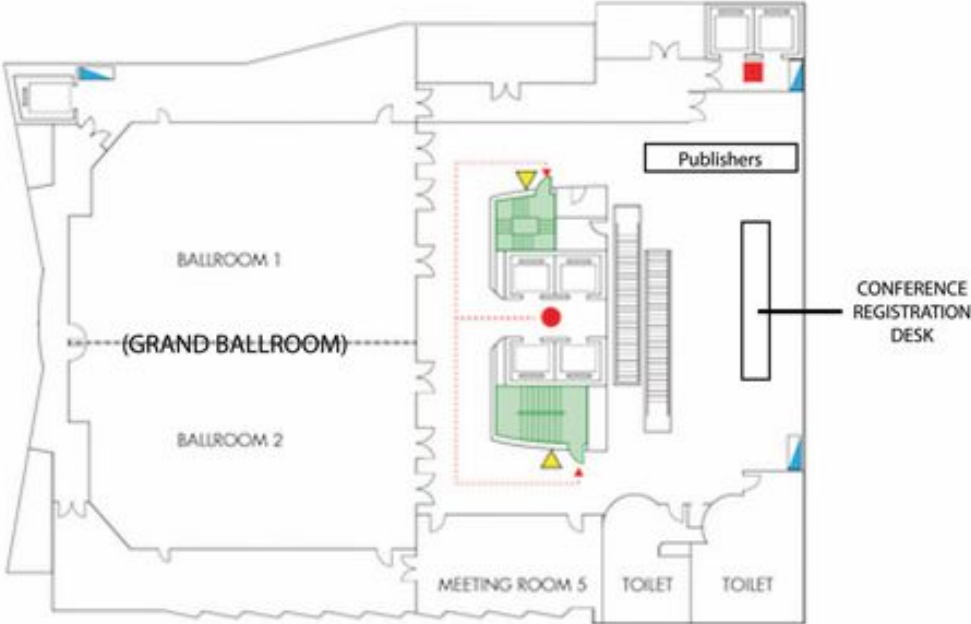
Hotel Floor Plan

Conference Participants are invited to use the escalators during the entire conference (not the lifts).
The Conference Registration Desk will be located on the 4th Floor.

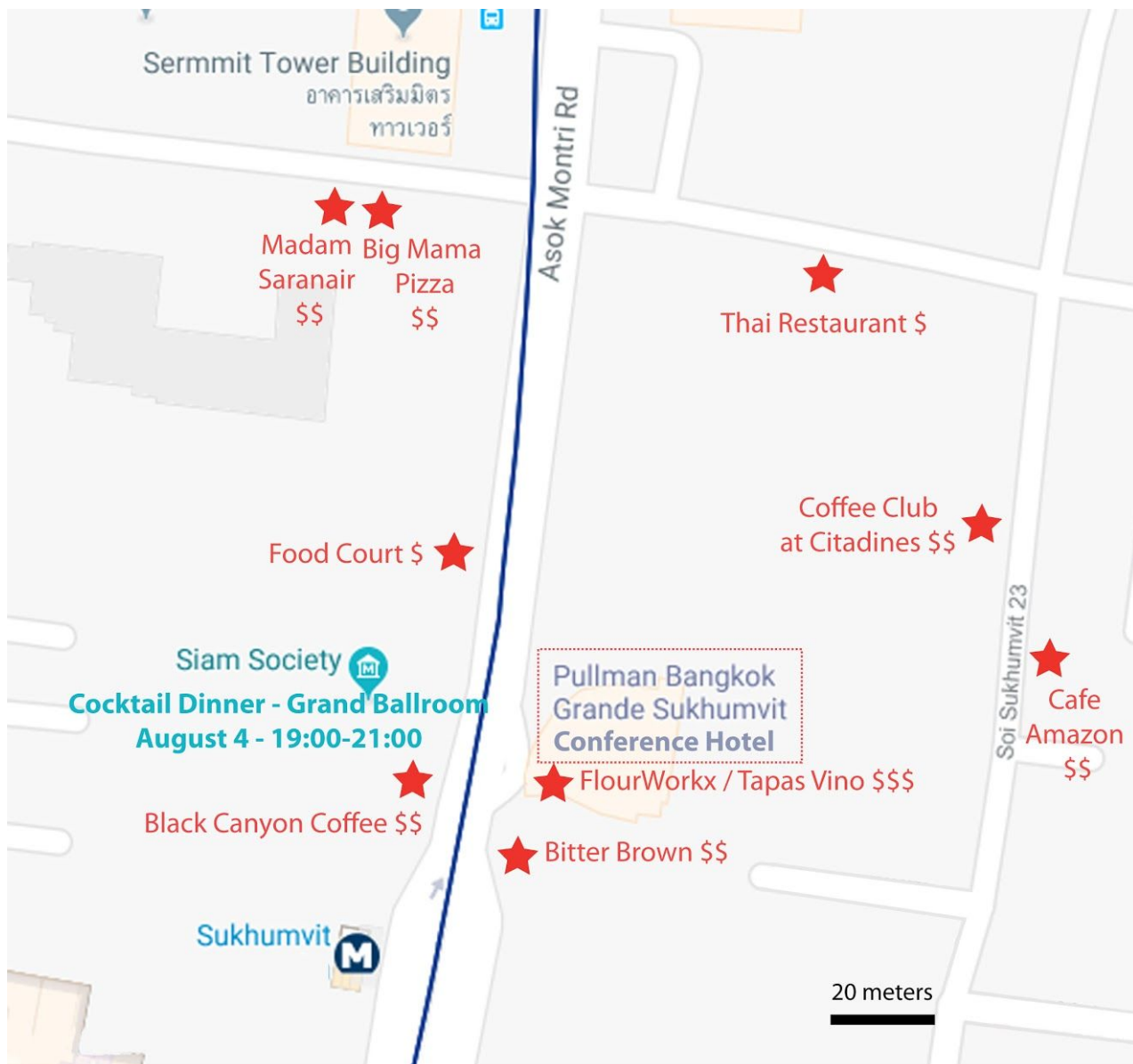
FLOOR 3



FLOOR 4



Restaurant Options Nearby



- \$ 40-100 Thai Baths
- \$\$ 100-300 Thai Baths
- \$\$\$ 300 Thai Baths and above

Cocktail Dinner - Grand Ballroom at the Siam Society -
 Saturday, August 4, 2018, 19:00-21:00